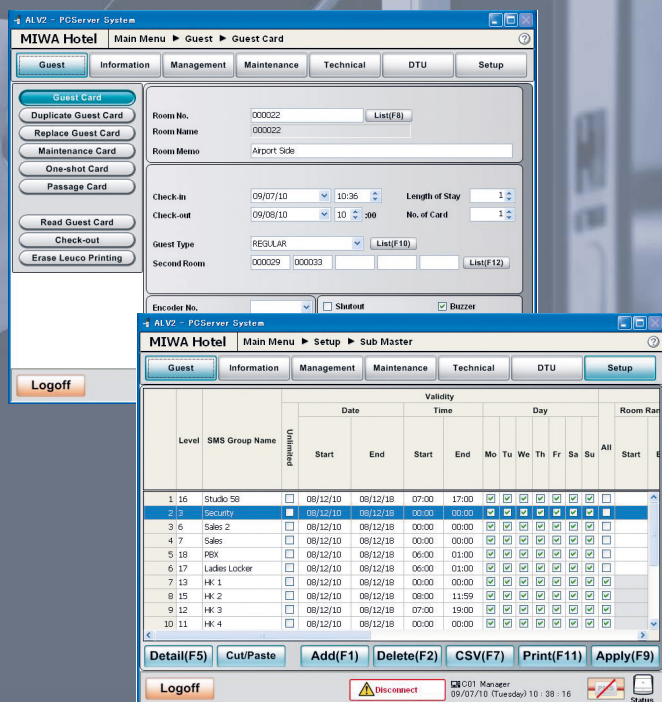


ALV2 (ALVB) series/ Peripherals

Card Issuing System



PC server software screen



USB connected card encoder

W65mm×H98mm×D12.8mm

Front Desk Key making system

ALV2 PC server Front Desk System

- Windows 7, 8 or 10 OS.
- ALV2 client software can be loaded on to any PC on the local network.
- USB powered encoder - small front desk footprint. Installed on any PC on the local network.
- Serial or TCP/IP connection to PMS.
- Guest card and staff card issuing through client or parent PC, password protected.
- USB powered BLE encoder - Mobile keys are encoded locally.
- Integral lock programmer and interrogator.
- Access to lock interrogation and programming via valid authorization code only.
- Authorization levels to be set by property.
- Authorization access through password or card and password.
- Data back up and system restore.
- Card issue auditing (guest and staff).

MIWA LOCK CO., LTD.

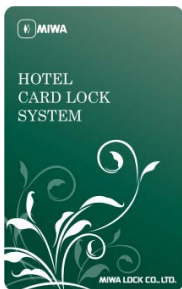
JAPAN 3-1-12, Shiba, Minato-ku, Tokyo 105-8510
 TEL: +81-3-3452-5568 FAX: +81-3-3452-5911 URL: www.miwa-lock.biz

U.S.A 9272 Jeronimo, Suite 119, Irvine CA 92618
 TEL: +1-949-328-5280 / Toll free: +1-888-412-9750 FAX: +1-949-328-5281 URL: www.miwalock.com

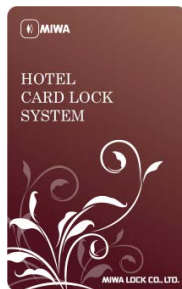
Key server Levels and Options

- **Guest Card** – These can be programmed to open an individual room or multiple rooms or areas within a property.
For example meeting areas can be added to the guest card for a club lounge, swimming pool, health club, etc.
Each guest card has the option to include up to 6 additional guest rooms, plus all the common areas.
- **Emergency card** – Can open all doors in the property no matter whether the deadbolt is engaged or not.
- **Master card** – Can open all locks in the property except when deadbolt is in use (unless lock has been programmed differently).
- **Sub-master cards** – Programmed to open doors with in the property by, room range, room type and floor. With our advanced master key structure these can be tailored to individual employee’s needs, allowing them only to go where you want them to go and when.
- **Master lock out card** – Once this card has been used in the lock no card can open the lock except for the emergency card (function canceled by use of Cancel card)
- **Housekeeping lock out** – To be used to lock out all existing guest cards but does not affect new issued cards (used when room has been cleaned and ready to be placed back into inventory, prevents checked out guests with cards still valid by time from re-entering the room).
- **Cancel card** – Cancels both lock out features.
- **Maintenance cards** – Programmed by time for specific room numbers.
- **Passage mode cards** – Option used for offices or meeting rooms.
- **One shot cards** – Used once in the lock, for showing rooms etc.
- **Standby cards** – Made for each guest room in the case of front desk equipment failure, such a power blackout etc.
- **Interrogation Cards**–Used to download interrogation data from the lock.
- Wrist bands and key fobs are also available instead of keycard.

Card/Tag/wristband



Mifare 1K (1kbyte)



Mifare 4K (4kbyte)

Card



Black



Red

Tag



Wristband

BLE Encoder:Bluetooth Smartphone

Miwa App available, Apple App store & Google play.



BLE encoder (for Mobile)
W105mm×H65mm×D40.2mm



App screen