

# Battery operated digital lock [ PiACK II ]

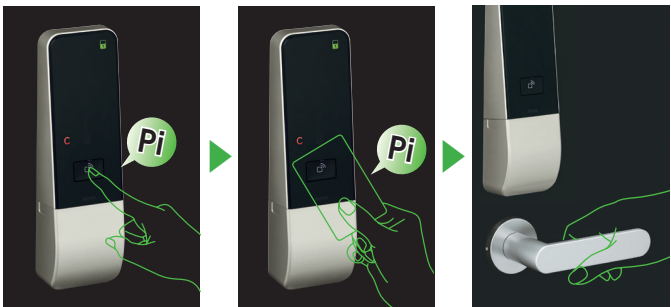


# PiACK II



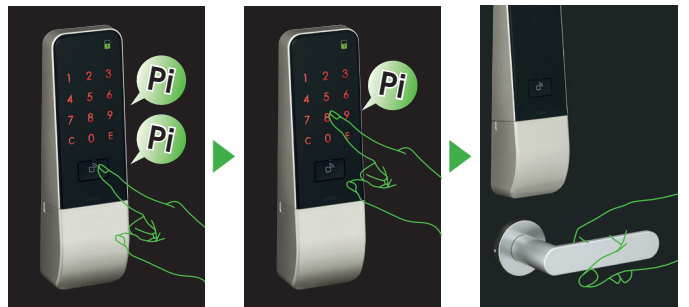
PiACK II is available for Both RFID card and PIN access, suitable digital door lock for apartment and residence.

## RFID card access (OR mode)



1. Press start button 1 time.
2. Tap the card to unlock.
3. Operate lever to open.

## PIN access (OR mode)



1. Press start button 2 times to activate PIN pad.
2. Input PIN to unlock.
3. Operate lever to open.

### Enhanced safety

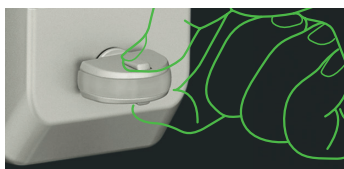
Random fake PIN feature is available to prevent intruders from checking the fingerprint marks left.



Peeping preventing screen

Random fake PIN  
Pressing random fake numbers before entering PIN.

Equipped Switch thumb-turn for high security.



### Various authentication mode available

#### [OR mode]

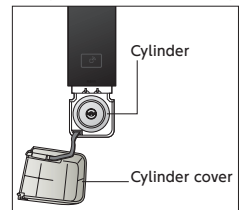
Use RFID card or PIN to unlock / lock. If PIN is registered, easy locking function is available.

#### [AND mode]

Require RFID card and PIN to unlock / lock for high security option. (Easy locking function is not available in AND mode)

### Mechanical key override option

In emergency situation, can be unlocked by mechanical key after removing cylinder cover.

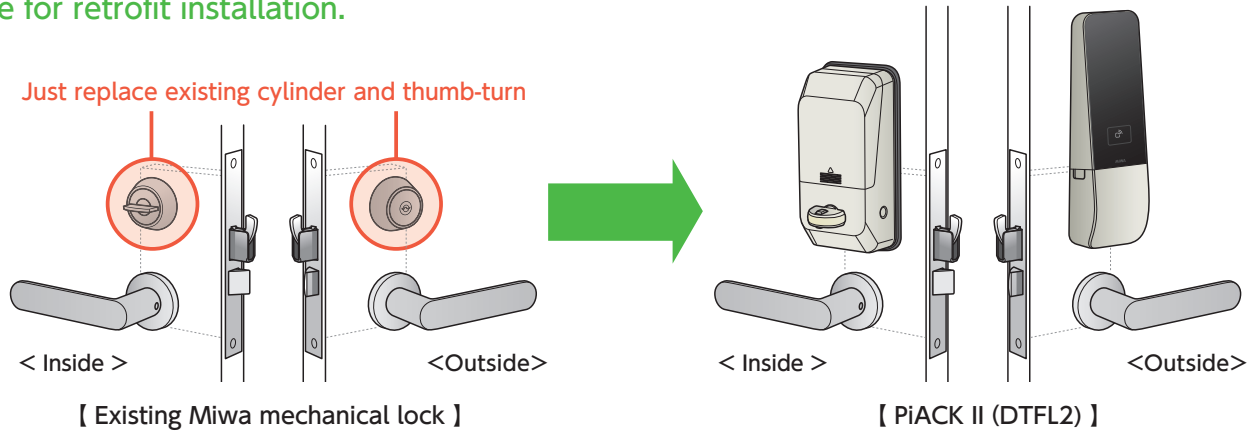


Note:

Auto locking function is not available.

Easy locking function is available only [OR mode] with PIN registered.

Easy installation without additional door cutting from Miwa mechanical lock.  
Suitable for retrofit installation.



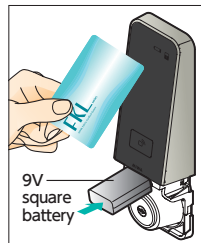
### Long battery life

AA alkaline battery or AA lithium battery are available with up to 2-year operation.

### Circumstance of usage

0°C~50°C : AA alkaline battery  
-30°C~50°C : AA lithium battery  
(Lithium battery is suitable for cold area)

Battery life is approximately 2 years (10 times per day operation in 20°C environment) Battery low alert is available with LED and buzzer. Even if battery is dead, external power supply is available.



### Specification

Code	DTFL2 (Alkaline battery)	DTFL2C (Lithium battery)
Cylinder type	U9, PR, JN	
Door thickness	33mm-50mm	
Backset	51mm, 64mm	
Finish	Black / Silver	
RFID card	Mifare (classic 1K, 4K), FeliCa	
ID capacity	RFID card	Construction card: 10 IDs / Registration card: 5 IDs / User card: 100 IDs / Master card: 10 IDs
	PIN	<b>[OR mode]</b> Construction: 3 IDs (4-12 digits) User: 3 IDs (4-12 digits) / Master: 1 ID (4-12 digits) <b>[AND mode]</b> 1 ID for each card. (Only 4 digits)
Handed	Can be switched at site	
Durability	100,000 times	
Battery	4 AA alkaline	4 AA lithium
External power supply	9V square alkaline battery	
Battery life	Up to 2 years (10 times per day operation in 20°C environment)	
Temperature / humidity	IP rating Outside: IPX5 / Inside: IPX4	

### Compatible mechanical lock

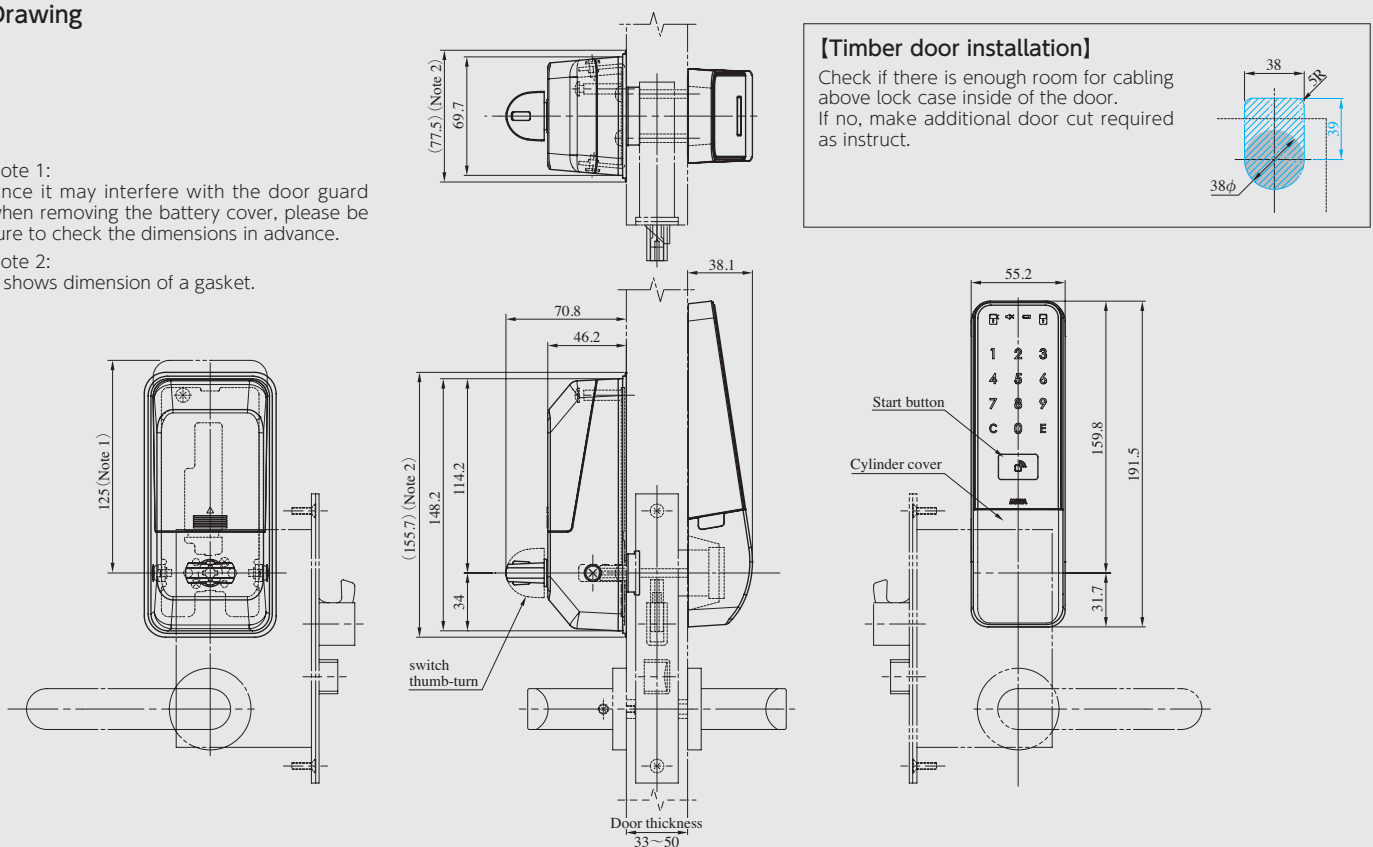
Code	DTFL2(C)-DA
Type	MIWA LA/LAF/MA/DA/DAF series

Note:  
- Mechanical lock (lockcase, lever handle, Cylinder, Strike) and RFID card need to be ordered separately.  
- Please check in advance if this product will not interfere with the existing frame and door guard.

### Drawing

Note 1:  
Since it may interfere with the door guard when removing the battery cover, please be sure to check the dimensions in advance.

Note 2:  
It shows dimension of a gasket.



**MIWA LOCK CO., LTD.**

JAPAN 3-1-12, Shiba, Minato-ku, Tokyo 105-8510 TEL: +81-3-3452-5568 FAX: +81-3-3452-5911 URL: www.miwa-lock.biz